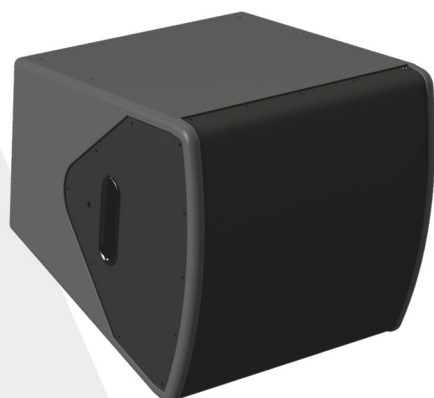


GAMMA 2 S

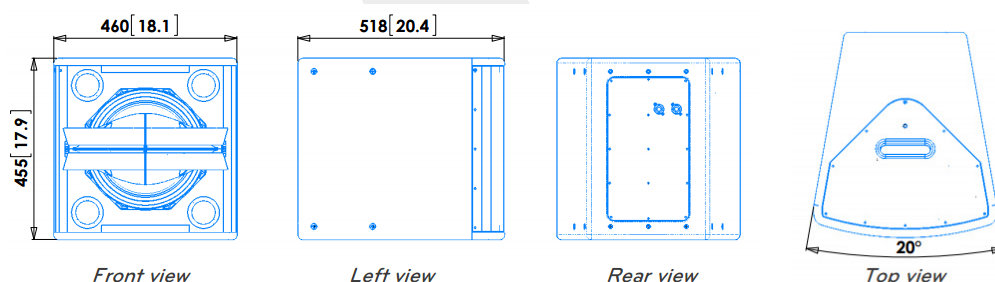


Spherical array slave element

- > Ultra precise audience coverage
- > 20° unitary up 360° by coupling 18 cabinets
- > 90° coverage on non coupling plane
- > Point source radiation with smooth polar response
- > To be used with ArphoniA amplified controllers
- > Advanced DSP, factory and user presets
- > 8 rigging points
- > Optional multifunctional bracket

Usable bandwidth (-10dB)	50 Hz to 20 kHz
Maximum peak SPL at 1m	132 dB SPL
Nominal coverage (-6dB)	90°H x 20°V (coupling angle)
Components	1x 12" weatherproof transducer 1x 1.4" throat neodymium driver coaxially mounted
Nominal impedance	8 Ohms LF, 16Ohms HF
AES power	400W LF, 150W HF
Cabinet	18mm birch plywood with internal braces 2x integrated handles
Finish	Gray, impact resistant structured water coating
Protection grill	Black acoustically transparent perforated steel, 2mm thick, with internal dust protective foam
Connectors	2x NL4 linked
Classification	IP54
Rigging	2x M8 inserts for bracket, 6x M6 inserts for rigging parts
Net unit weight	26 kg 57 lb
Gross weight, packed	30 kg 66 lb

Drawings mm [inches]



ARPHONIA
COLLECTION