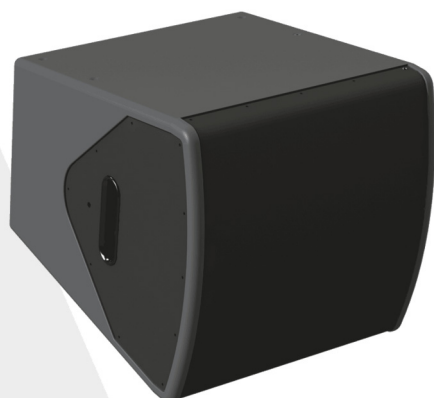


GAMMA 2 A

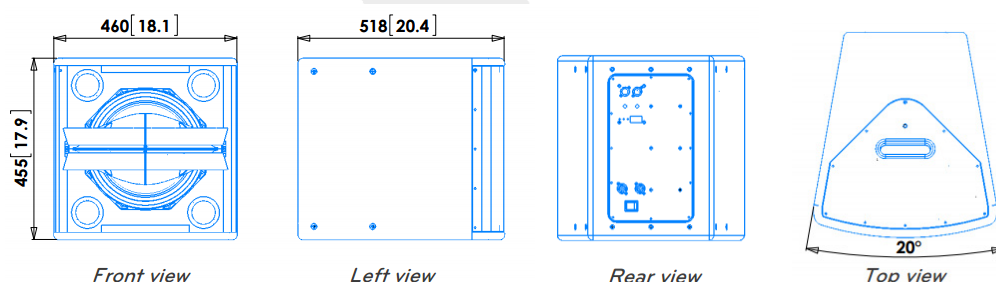


Spherical array active element

- > Ultra precise audience coverage
- > 20° unitary up 360° by coupling 18 cabinets
- > 90° coverage on non coupling plane
- > Point source radiation with smooth polar response
- > 1000W integrated amplifier
- > Advanced DSP, factory and user presets
- > Psychoacoustics dynamic filters
- > Flat amplitude and phase response

Usable bandwidth (-10dB)	50 Hz to 20 kHz
Maximum peak SPL at 1m	130 dB SPL
Nominal coverage (-6dB)	90°H x 20°V (coupling angle)
Components	1x 12" weatherproof transducer 1x 1.4" throat neodymium driver coaxially mounted
Amplifier	1000W, 90V to 250V AC, Full protections
DSP	48kHz, 24 bits, 96 bits internal calculation, RS485, 8 integrated presets, unlimited PC presets
Cabinet	18mm birch plywood with internal braces 2x integrated handles
Finish	Gray, impact resistant structured water coating
Protection grill	Black acoustically transparent perforated steel, 2mm thick, with internal dust protective foam
Connectors	2x NC3 Inputs linked, 2x RS485, 2x mains Powercon linked,
Classification	IP54
Rigging	2x M8 inserts for bracket, 6x M6 inserts for rigging parts
Net unit weight	28 kg, 62 lb
Gross weight, packed	32 kg, 71 lb

Drawings mm [inches]



ARPHONIA
COLLECTION