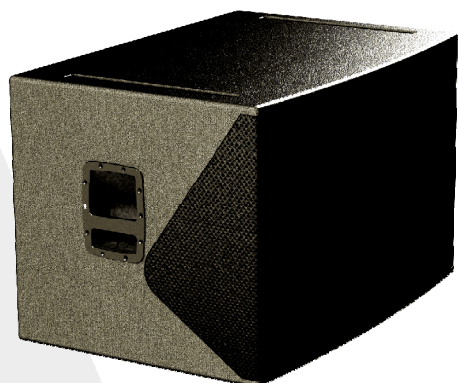


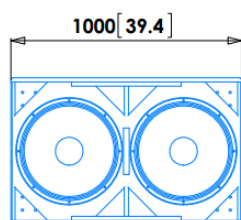
BETA 3 S



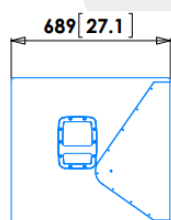
High power slave subwoofer

- > ALPHA 2 HQ companion subwoofer
- > Deep and punchy sound
- > Cardioid mode presets
- > Very rigid construction for cancelling vibrations
- > Full power handling with low thermal compression
- > To be used with ArphoniA controllers and amplifiers

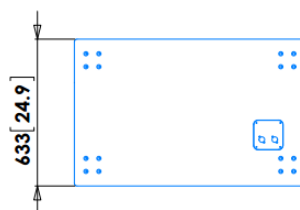
Usable bandwidth (-10dB)	30 Hz to 300 Hz
Peak SPL at 1m	140 dB SPL
Components	2x 18" weatherproof long excursion transducer
Nominal impedance	4 Ohms
AES power	1400W
Cabinet	18mm birch plywood with internal braces, 2x integrated handles
Finish	Gray, impact resistant structured water coating
Protection grill	Black acoustically transparent perforated steel, 2mm thick, with internal dust protective foam
Connectors	2x NL4 linked
Classification	IP54
Net unit weight	95 kg 209 lb
Gross weight, packed	100 kg 220 lb



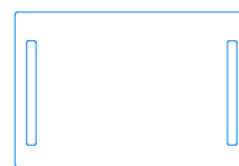
Front view



Left view



Rear view



Top view

Drawings mm [inches]

ARPHONIA
COLLECTION