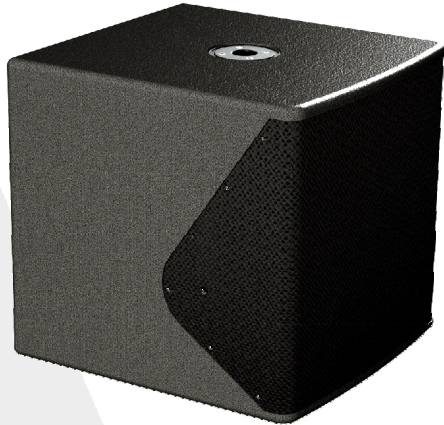


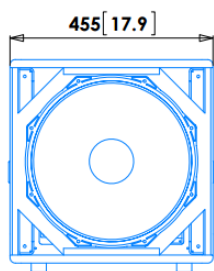
BETA 1 A



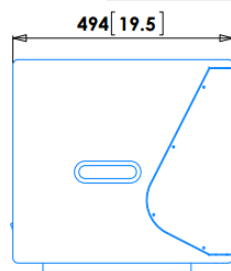
Compact self powered subwoofer

- > ALPHA 1 companion subwoofer
- > Deep and punchy sound
- > Cardioid mode presets
- > Very rigid construction for cancelling vibrations
- > 1000W integrated amplifier
- > Advanced DSP, factory and user presets
- > Psychoacoustics dynamic filters
- > 1x Pole mount

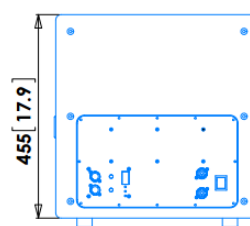
Usable bandwidth (-10dB)	40 Hz to 300 Hz
Peak SPL at 1m	130 dB SPL
Components	1x 15" weatherproof long excursion transducer
Amplifier	1000W, 90V to 250V AC, Full protections
DSP	48kHz, 24 bits, 96 bits internal calculation, RS485, 8 integrated presets, unlimited PC presets
Cabinet	18mm birch plywood with internal braces, 2x integrated handles
Finish	Gray, impact resistant structured water coating
Protection grill	Black acoustically transparent perforated steel, 2mm thick, with internal dust protective foam
Connectors	2x NC3 Inputs linked, 2x RS485, 2x mains Powercon linked
Classification	IP54
Net unit weight	37 kg 82 lb
Gross weight, packed	41 kg 91 lb



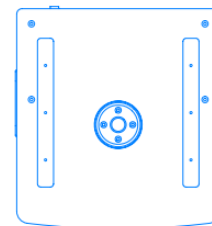
Front view



Left view



Rear view



Top view

Drawings mm [inches]

ARPHONIA
COLLECTION