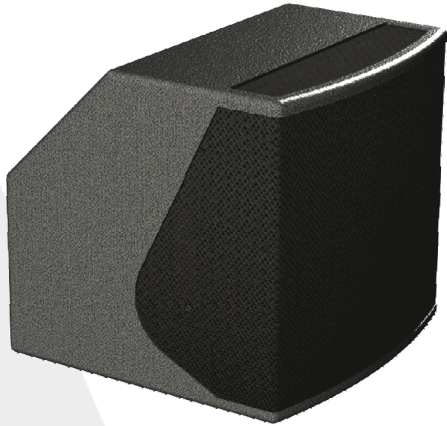


ALPHA 2 A HQ

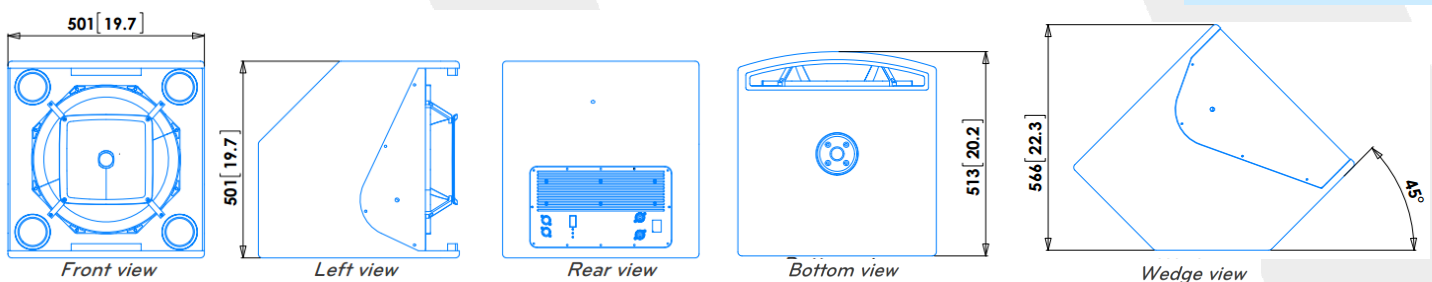


Narrow coverage coaxial self powered loudspeaker

- > For limited audience coverage
- > Point source radiation with smooth polar response
- > 1000W integrated amplifier
- > Advanced DSP, factory and user presets
- > Psychoacoustics dynamic filters
- > Flat amplitude and phase response
- > Pole mount + 3 rigging points
- > Optional multifunctional bracket

Usable bandwidth (-10dB)	50 Hz to 20 kHz
Maximum peak SPL at 1m	134 dB SPL
Nominal coverage (-6dB)	90°H x 50°V
Components	1x 15" weatherproof transducer 1x 1.4" throat neodymium driver coaxially mounted
Amplifier	1000W, 90V to 250V AC, Full protections
DSP	48kHz, 24 bits, 96 bits internal calculation, RS485, 8 integrated presets, unlimited PC presets
Cabinet	18mm birch plywood with internal braces, 2x integrated handles
Finish	Gray, impact resistant structured water coating
Protection grill	Black acoustically transparent perforated steel, 2mm thick, with internal dust protective foam
Connectors	2x NC3 Inputs linked, 2x RS485, 2x mains Powercon linked
Classification	IP54
Rigging	3x M8 inserts 1x Pole mount Optional multifunctional bracket
Net unit weight	27 kg 60 lb
Gross weight, packed	30 kg 66 lb

Drawings mm [inches]



ARPHONIA
COLLECTION