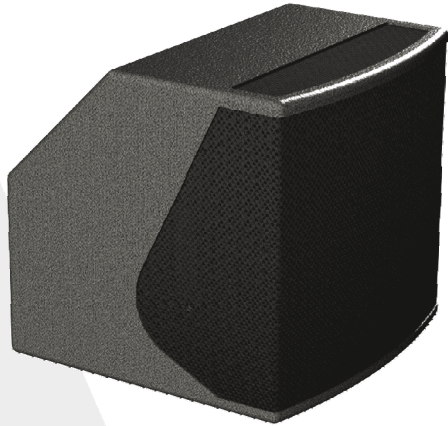


ALPHA 1 S HQ

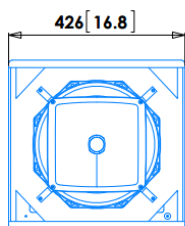


Narrow coverage slave loudspeaker

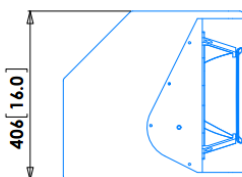
- > For limited audience coverage
- > Point source radiation with smooth polar response
- > To be used with ArphoniA controllers and amplifiers
- > Advanced DSP, factory and user presets
- > Psychoacoustics dynamic filters
- > Flat amplitude and phase response
- > Pole mount + 3 rigging points
- > Optional multifunctional bracket

Usable bandwidth (-10dB)	50 Hz to 20 kHz
Maximum peak SPL at 1m	136 dB SPL
Nominal coverage (-6dB)	90°H x 50°V
Components	1x 12" weatherproof transducer 1x 1.4" throat neodymium driver coaxially mounted
AES power	400W LF + 150W HF
Cabinet	18mm birch plywood with internal braces, 2x integrated handles
Finish	Gray, impact resistant structured water coating
Protection grill	Black acoustically transparent perforated steel, 2mm thick, with internal dust protective foam
Connectors	2x NL4 linked
Classification	IP54
Rigging	3x M8 inserts 1x Pole mount Optional multifunctional bracket
Net unit weight	24 kg 53 lb
Gross weight, packed	27 kg 60 lb

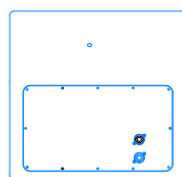
Drawings mm [inches]



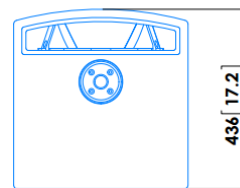
Front view



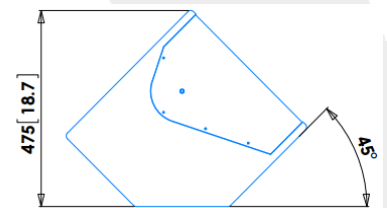
Left view



Rear view



Bottom view



Wedge view

ARPHONIA
COLLECTION